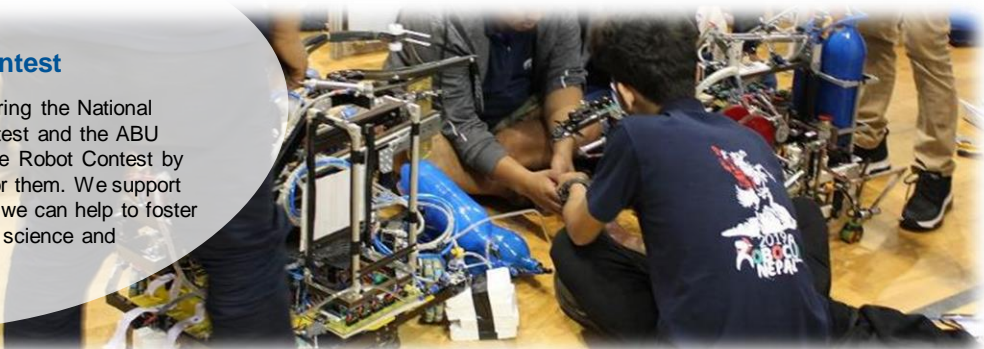


# Educational Support Efforts

We provide educational support to students and children who will lead the next generation to help them grow up surrounded by the joy of science and manufacturing.

## Sponsoring Robot Contest

Mabuchi has been co-sponsoring the National Technical College Robot Contest and the ABU Robot Contest and the College Robot Contest by providing motors and funds for them. We support these events in the hope that we can help to foster future engineers and develop science and technology.



National Technical College Robot Contest



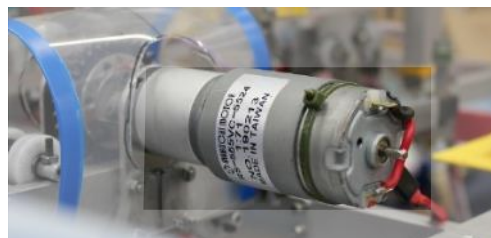
ABU Robot Contest

## Providing Motors

Support for National Technical College Robot Contest  
About 24,000 motors in total.



RS-555VC with gear head (top)      JC/LC-578VA  
RS-385PH with gear head (bottom), etc.



## Summer Vacation Handicraft Class

We hold the “summer vacation handicraft class for parents and children” every year for fourth through sixth graders living in the area around the Headquarters (Matsudo City, Chiba Prefecture). We are going to continue this handicraft class so that more students can enjoy the pleasure of creating something.



## Wooden craft events

In addition to summer vacation classes, children enjoyed wooden crafts using our motors at the Shizuoka Hobby Show in May and at the Chiba Museum of Science and Industry in late August.



Handicraft event at Shizuoka Hobby Show



Industrial Science Museum work event

## Delivering on-site Classes

We have been sending our head office employees to elementary schools in the area (Matsudo City, Chiba Prefecture) as science instructors every year. We have received comments from children, who received classes using science teaching materials developed independently, saying things such as they found science to be fun as they experimented with magnets using motor components.



Classes held in a local elementary school (Headquarters)



Classes held in the Japanese School (Jiangsu Mabuchi)

## Workplace Experience and Company Observation

Headquarters takes in local elementary school students in cooperation with the career education programs at their schools. Also, our overseas bases are also inviting local students and family members of the employees to observe workplaces.



Workplace experience for junior high school students (Headquarters)



Elementary school student tours (Headquarters)



Special school student tours (Headquarters)



Employee family tours (Jiangsu Mabuchi)

## Support to Kashiwa Reysol Academy as a sponsor

As part of our local community contribution activities, our head office concluded a uniform sponsorship agreement with Kashiwa Reysol Academy established as an organization for helping human resources to become football players of Kashiwa Reysol, a professional football team. It also supports the development of young people.



## Exhibition and Support for Events at the Science Museum

Mabuchi has been presenting a permanent exhibition at the Science Museum (Chiyoda-ku, Tokyo) to support scientific education for young people. Displays include an explanation on the mechanism of motors, various motors used in daily lives, and handicrafts powered by a motor. And, every autumn, we offer a science experiment class in collaboration with the Museum.



Science experiment class in the Science Museum (Headquarters)

## Internship Program

Through our internship program, we continuously accept domestic and overseas students as interns to give them an opportunity to deepen their understanding of Mabuchi's philosophy through actual work.

